

# Galava Walk



- Impressive, double fronted, five bedroom property
- Attractive position looking onto farm track
- Generous southerly garden, detached double garage
- Spacious lounge, study/play room and 27ft plus kitchen/family space
- Master bedroom with robes and ensuite

**£320,000**



Multi-Award Wining

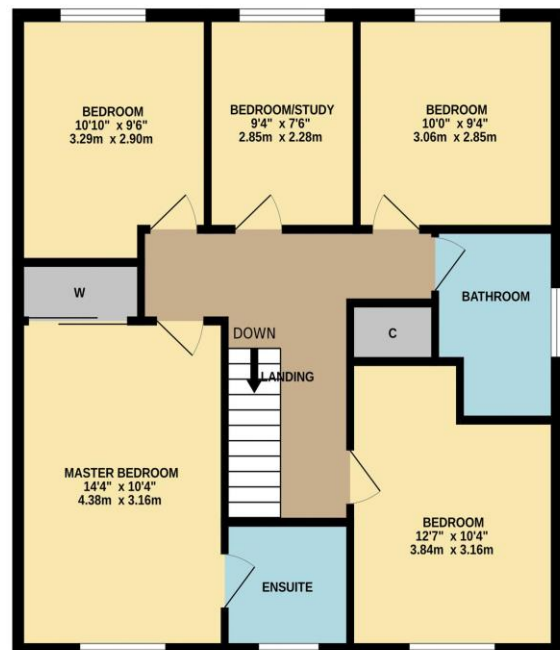
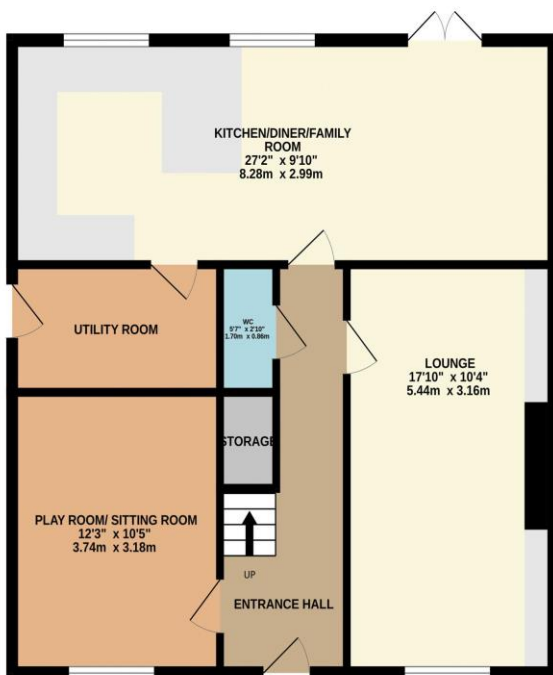


This spacious, and double fronted five bedroom property is located within this popular area of Ingleby Barwick, built to this executive and larger style, design. The current owner has the property decorated tastefully throughout, and improvements have been commissioned with 'tailored' storage solutions, fitted robes, and a feature, display chimney breast in the lounge with modern fire - amongst many other features.

Externally, the property enjoys a front outlook onto a quiet farm track, with a generous, enclosed south facing rear garden, rear drive and double garage. The impressive ground floor delivers an entrance hall, cloakroom/WC, study/playroom, generous lounge, and impressive 27ft plus kitchen/diner/family room with utility off. The first floor boasts five great bedrooms, 'Master' with fitted robes, and en-suite, separate family bathroom.

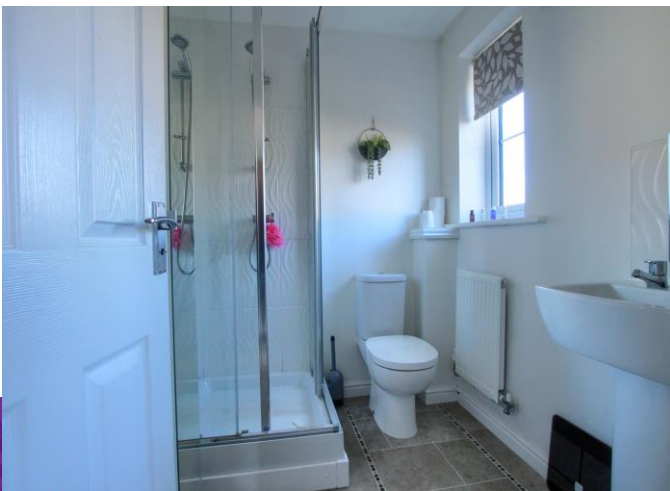
GROUND FLOOR

1ST FLOOR



Whilst every attempt has been made to ensure the accuracy of the floorplan contained here, measurements of doors, windows, rooms and any other items are approximate and no responsibility is taken for any error, omission or mis-statement. This plan is for illustrative purposes only and should be used as such by any prospective purchaser. The services, systems and appliances shown have not been tested and no guarantee as to their operability or efficiency can be given.  
Made with Metropix ©2023

# “The Ingleby Barwick Experts”





Tenure: Freehold

Council Tax Band: E

EPC Rating: B



AGENTS NOTE: Every care has been taken with the preparation of these details, but they are for general guidance only. Measurements and dimensions are approximate, and any fixtures or fittings shown in photography does not infer that they are to be included within the sale. The agent has not tested any appliances or supplies and professional verification of these should be sought prior to purchase if required. These particulars do not constitute a contract or part of a contract.